

Nurbek Bekmukhambetov

Kazakhstan Temir Zholy (Kazakhstan Railways)



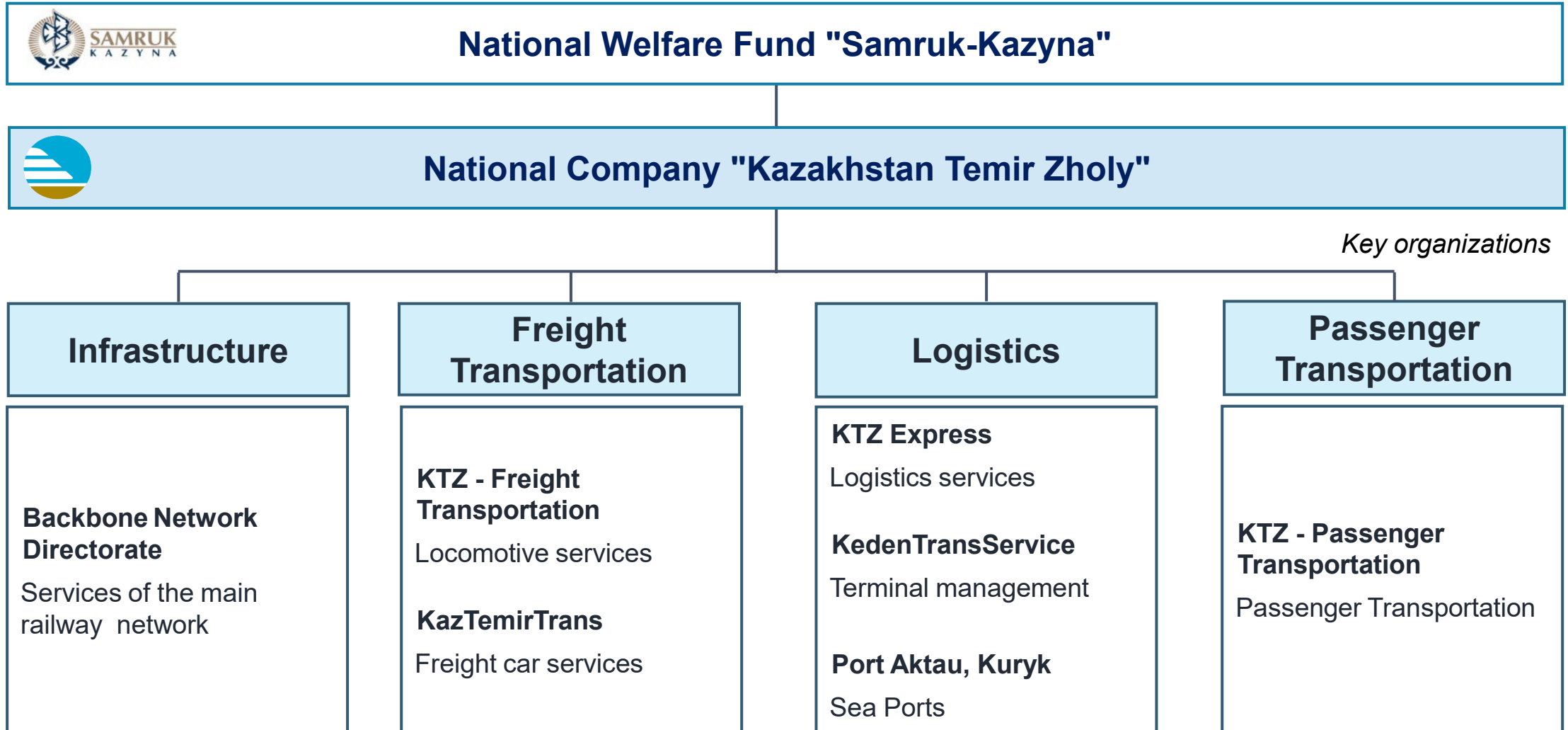
**KAZAKHSTAN
RAILWAYS**

Presentation Overview

- **01** • KTZ - Kazakhstan National Railway Company
- **02** • Kazakhstan – Transit Hub
- **03** • Trans-Caspian International Transport Route (Middle Corridor)
- **04** • Transformation of KTZ into National Transport Logistics Company
- **05** • Multimodal Transportation and Air Cargo
- **06** • Potential Cooperation

Kazakhstan Temir Zholy

Sole shareholder



Kazakhstan National Railway Company



EMPLOYEES

113 847



BACKBONE RAILWAY
NETWORK

16 006 KM



LOCOMOTIVES

1 731



FREIGHT CARS

47 641

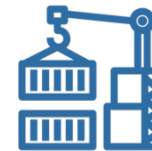


TERMINALS

10 transshipment points

2 dry ports

1 terminal in Lianyungang port



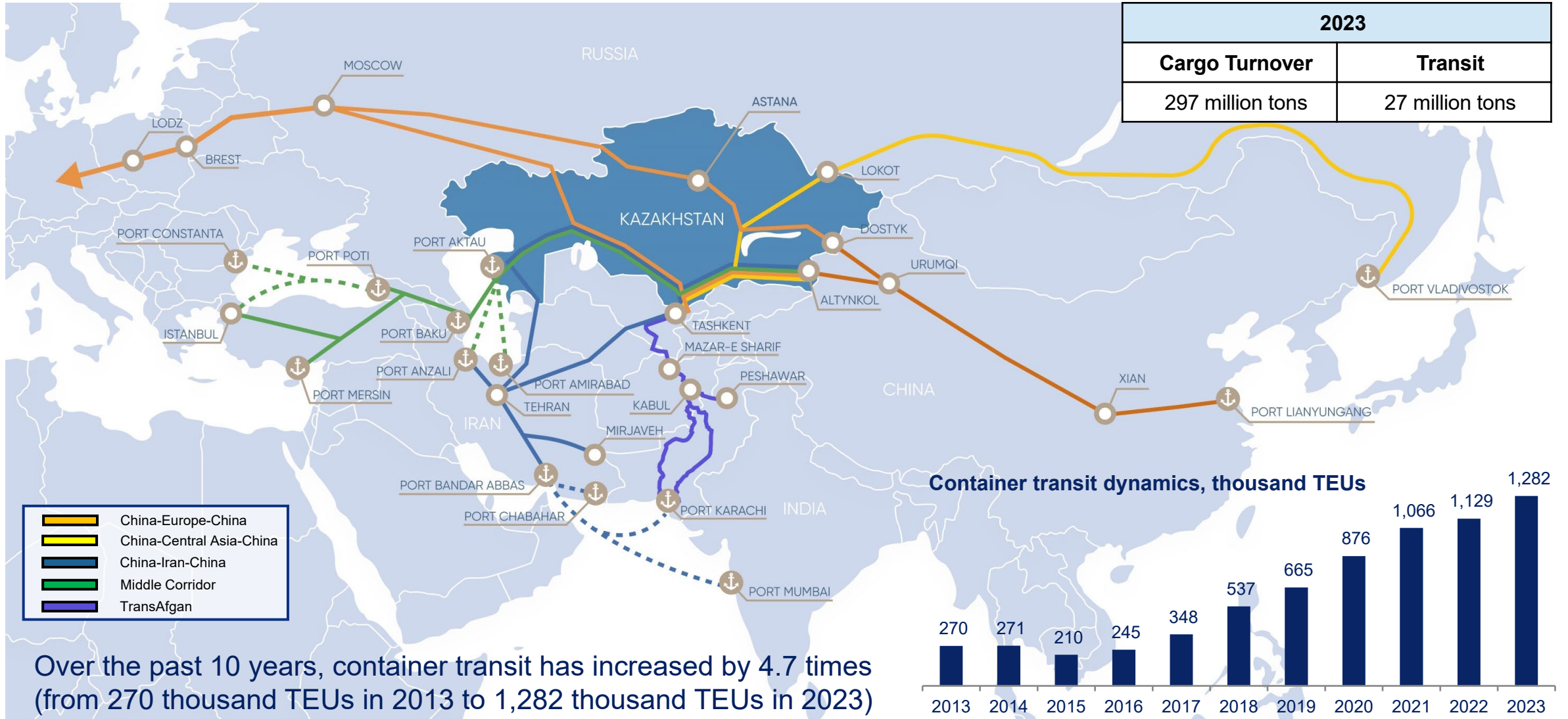
SEA ASSETS

2 sea ports

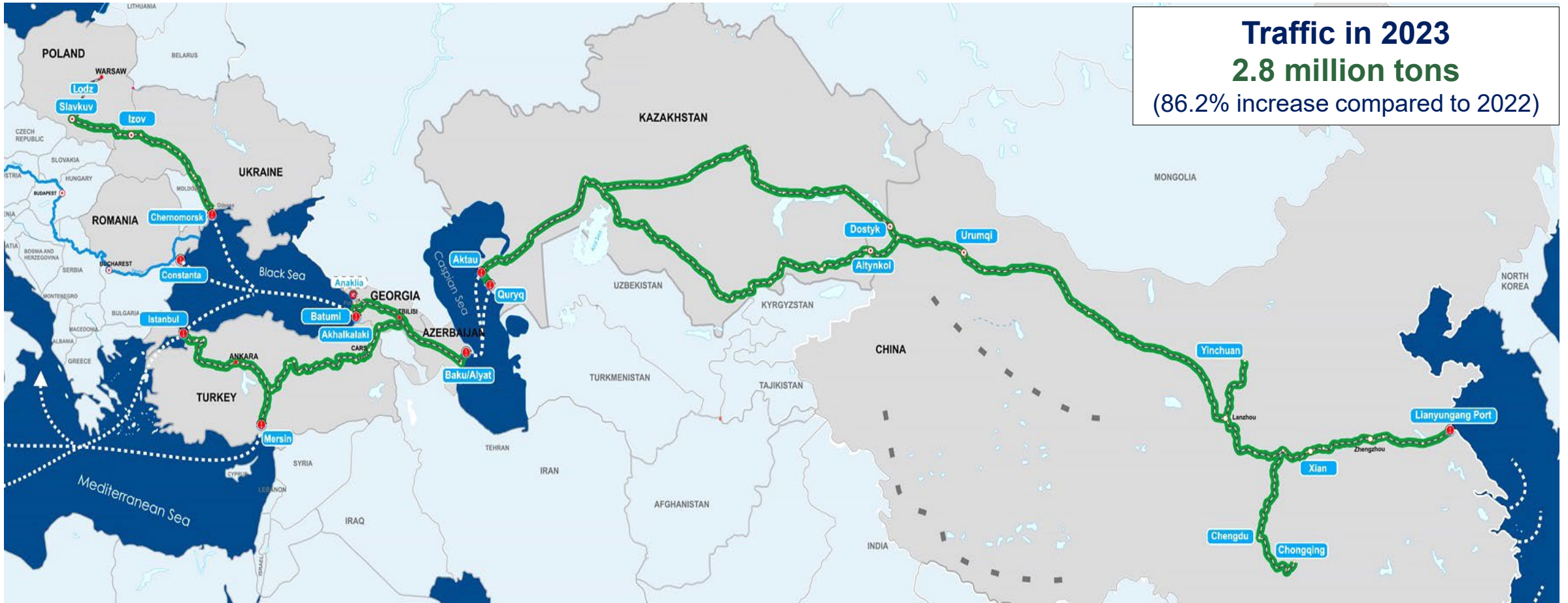
1 sea terminal

2 sea vessels

Kazakhstan – Transit Hub



Trans-Caspian International Transport Route



Trans -Caspian International Transport Route

China – Kazakhstan – Azerbaijan – Georgia – Europe

9 400-11 000 km

13-23 days

Sea Route

China – Egypt (Suez) – Europe

16 400 km

35-45 days

Transformation into National Transport Logistics Company

- ✓ Increased Transit Traffic
- ✓ Expanded Logistics Services
- ✓ **Multimodal Transportation**
- ✓ Development of Regional Hubs
- ✓ Digitalization
- ✓ Infrastructure Development
- ✓ International Cooperation



Air Cargo Division Development in KTZ

KUEHNE+NAGEL 

 MAERSK

 CMA CGM

 MSC

 DB SCHENKER

 DSV

Multimodal Transportation and Air Cargo

Multimodal transit via
Almaty airport
Rail-Truck-Air



Cooperation



Railway Transit Volumes
Transport Infrastructure
Multimodal Transportation
Freight Forwarding
Representative Offices

Expertise in Air Cargo
Transportation
Managerial, Commercial and
Operations Support

THANK YOU

Nurbek Bekmukhambetov

**Director of Multimodal
Transportation Department, KTZ**

bekmukhambetov_n@railways.kz

